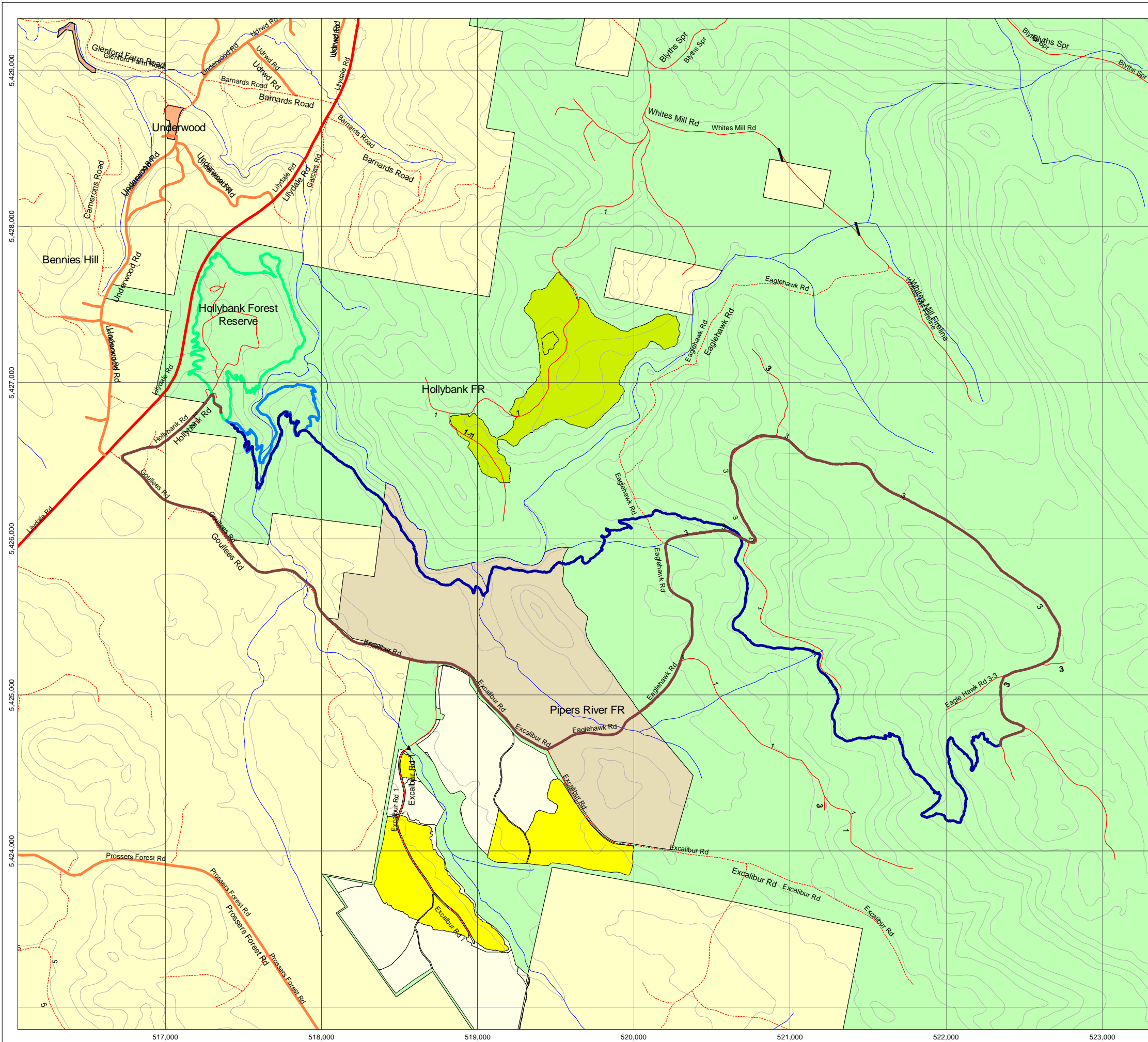


NE MOUNTAIN BIKE

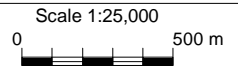
HOLLYBANK

GPS4 20141122 PJBird

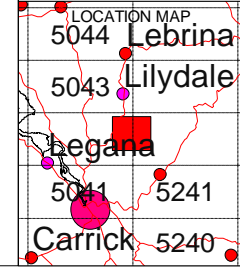


- MTB XC Road to Jugernaut 11.23km 340m-725m
- MTB XC Jugernaut - Blue 10.34km 335m-740m
- MTB XC Tall Timbers - Blue 3.6km 335m-390m
- MTB XC No Sweat - Green 4.5km 315m-385m
- Bridge
- Log Culvert
- Transend Transmission Lines
- Tracks of Tasmania
- Road - State level significance
- Road - Regional level significance arterials and access
- Road - Forestry Operational significance
- Road - Other
- Rivers (Class 1 and 2)
- Hardwood Plantation
- Softwood Plantation
- Not Applicable
- Private Property
- Public Reserve
- Game & Regional Reserve, Nature Recreation & Conservation Areas
- State Forest

NOTE: Co-ordinates on this map are based on GDA94. Any topographic data on this map has been supplied by DPIWE. Data is captured at differing scales & boundaries may not always co-incide.



Date: Tuesday, November 25, 2014 (c) Copyright Forestry Tasmania.



Prepared by: pjb
Prepared for: Mountain Biking Tasmania

A3L