

Shuttle Routes to Atlas trails

NOTE – You can start the Atlas trail at quarry on Mt Paris Dam Rd or save your legs about 2 km and turn off Mt Paris Dam Rd and drive through some pine plantation via purple route on map (Carnac Rd). Sign on Mt Paris Dam road about 7 km from Welborough Hotel or 14 km from Branxholm end. Travel time in car about 30 minutes, one way)

Driving – Route 1

Derby via Welborough (Tasman Highway) and then 6 km up Mt Paris Dam Rd (dirt) to quarry or continue on about 1 km and turn right. Follow signs to trail head. (about 2 km)

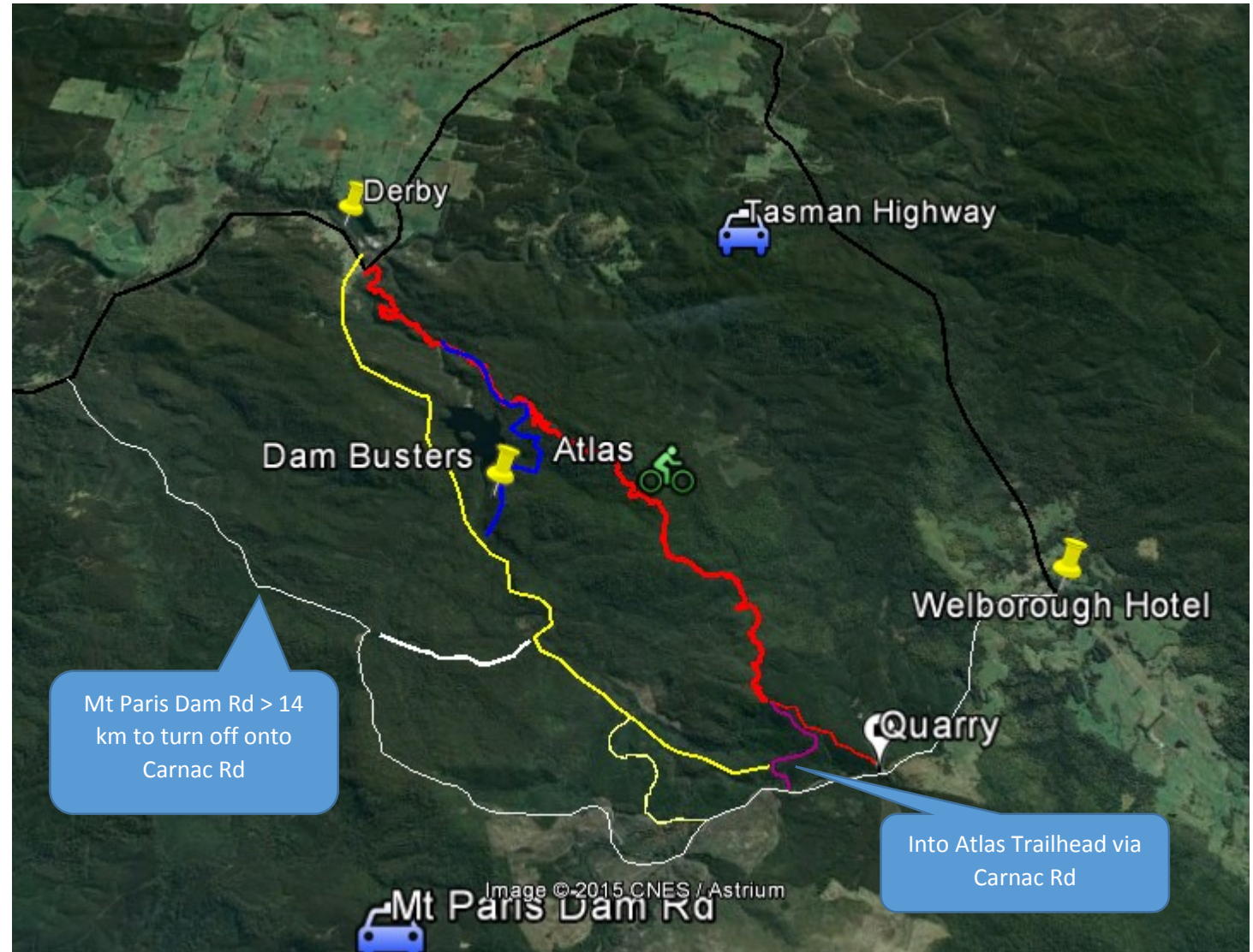
Driving – Route 2

Derby > via Branxholm turn off and then 14 km up Mt Paris Dam Rd (dirt)

You can then turn off to the left up purple Carnac Rd and 2 km up to trail head or don't turn off Mt Paris Dam Rd and drive another km to quarry.

Riding Bike (mainly up (steep in places) about 60 – 90 minutes) 14 km ride

Yellow route via Cascade Dam Rd or trails to get to Dambusters. Instead of going across new fancy bridge at southern end of dam, over Cascade Creek, continue along forestry road, which is Carnac Rd. Follow this for another few kms and then it heads to right and up. As you head up, take first turn to the left and follow this straight through. You'll get wet feet as you cross a creek and you'll end up hitting the car shuttle route on the blue trail. See next page



Ride route to Atlas Trail Head > 14 km up 800 metres elevation (From Derby)

